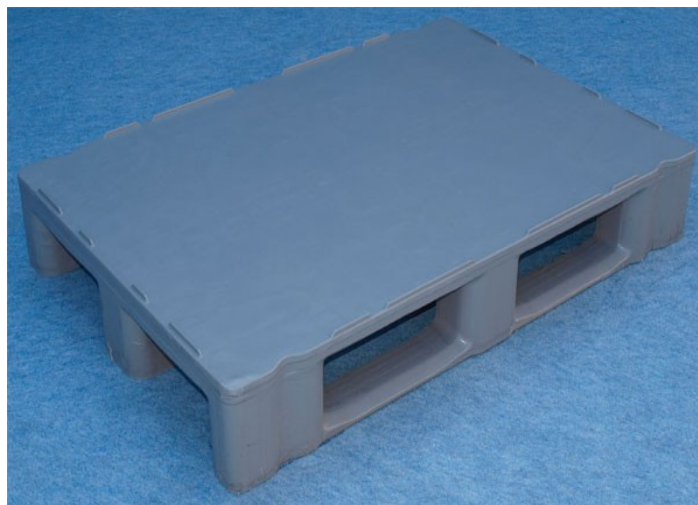


| | | | |
|-----------------------------------|--------------------------------------|--------------------------------|---------------------------------|
| New Pallets | Used Pallets | Pallet-Collars | Guide to ISPM15 |
| Pallets Purchased | Heat Treated Pallets | Special Offers | Plastic Pallets |

Pallet 5



| | | |
|-------------------|--|------------------|
| Dimensions: | Length: 1200 x Width: 800 x Height: 150 mm | |
| Weight: | 17kg | |
| Maximum Capacity: | Static - 2000kg | Dynamic - 1500kg |
| | <i>Next Day Delivery Throughout the UK</i> | |

With Appreciation
Associated Pallets Ltd

Tel : 08000 288655
Email : info@associated-pallets.co.uk
Web : <http://associated-pallets.co.uk/>

Design by: <http://x3int.net/>

